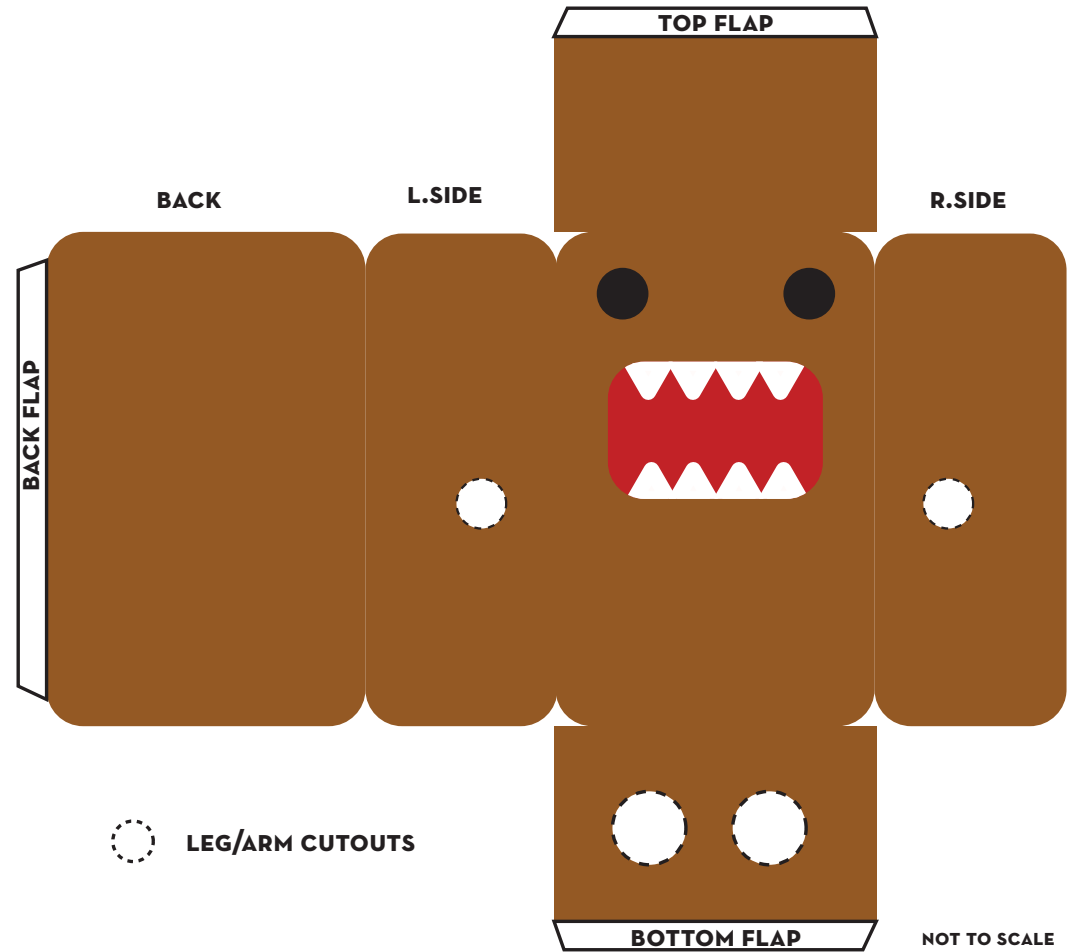


# DOMO-KUN COSTUME DIAGRAM

SUGGESTED MATERIALS - CARDBOARD, RED SPRAYPAINT, SCREEN (FOR WINDOW), BROWN SHIPPING TAPE, OLD CARPET, BOWLS OR ROUND OBJECTS FOR EYES (PAINT BLACK), PAPER-MACHE FOR ROUNDED CORNERS.

DIAGRAM DOES NOT INCLUDE - SCALE - YOU WILL NEED TO SIZE THE DOMO-KUN ACCORDING TO YOUR HEIGHT/WEIGHT. LEGS/ARMS - I'D SUGGEST A THICK FOAM WRAPPING OR OLD CARPET FOR THESE ITEMS.

TIPS - THE WEIGHT OF THE COSTUME WILL REST ON YOUR SHOULDERS SO PLAN ACCORDINGLY. ROUNDED CORNERS CAN BE ACHIEVED THROUGH PAPER-MACHE, CARPET OR FOAM. INSET THE MOUTH TO ACHIEVE DIMENSION. THE MOUTH SHOULD INCLUDE A SPRAY-PAINTED SCREEN FOR VISIBILITY.



## REFERENCE IMAGES

